



MONTHLY MEMBERSHIP PROGRESS REPORT

District 24 C

Results as of: 6/30/2017

GMT: OPEN

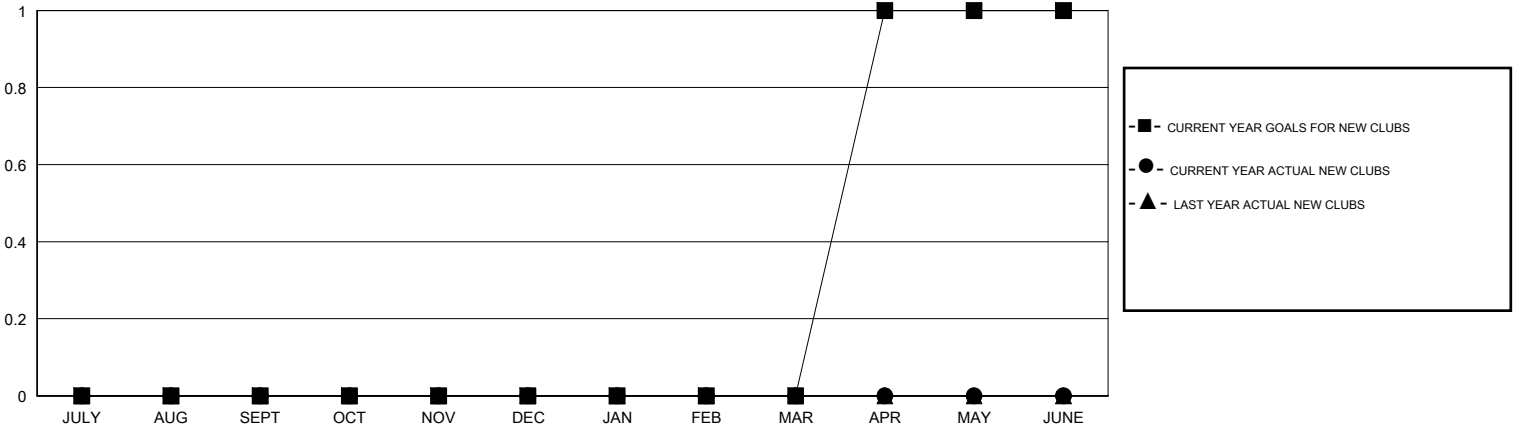
LOCATION VIRGINIA

GMT CA

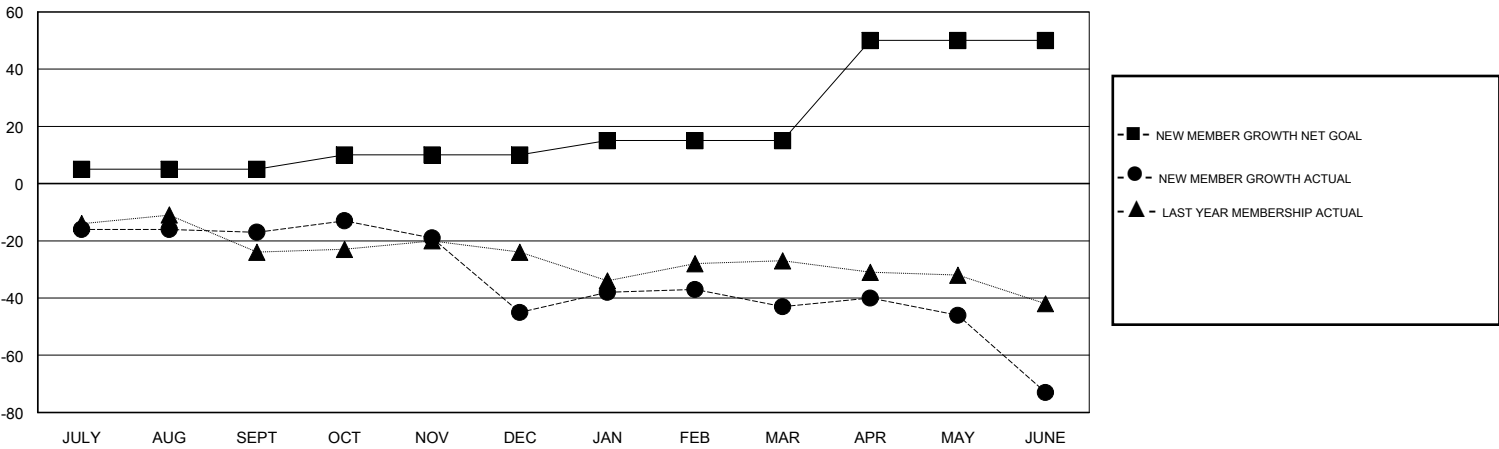
Clubs			
RESULTS FOR 2016-2017			
QUARTER	NEW CLUB GOAL	NEW CLUBS	DROPPED CLUBS
JULY/AUG/SEPT	0	0	0
OCT/NOV/DEC	0	0	1
JAN/FEB/MAR	0	0	0
APR/MAY/JUNE	1	0	1

Members			
RESULTS FOR 2016-2017			
QUARTER	NEW MEMBER GROWTH NET GOAL (not reinstated or transfers)	NEW MEMBER GROWTH ACTUAL (not reinstated or transfers)	DROPPED MEMBERS ACTUAL (including transfers)
JULY/AUG/SEPT	5	13	30
OCT/NOV/DEC	5	22	50
JAN/FEB/MAR	5	46	44
APR/MAY/JUNE	35	30	60

GOALS AND ACTUAL NEW CLUBS CUMULATIVE



GOALS AND ACTUAL MEMBERS CUMULATIVE



DROPPED CLUBS: 2	26 CLUBS OF 46 ADDED 1 OR MORE NEW MEMBERS	<u>GENDER DISTRIBUTION</u>	
DROPPED MEMBERS		MALE	935 (74.15%)
DECEASED	30	FEMALE	326 (25.85%)
CLUB CANCELLED	32	TOTAL FAMILY UNIT MEMBERS	
OTHER	122	194	
TOTAL	184	FAMILY MEMBERS PAYING HALF DUES	
		97	

[CLICK HERE FOR CUMULATIVE MEMBERSHIP DATA](#)